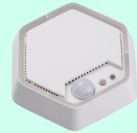
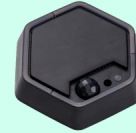


UNIVERSAL COMFORT SENSOR FOR SMART BUILDINGS

Part No: 1201153 White / 1202153 Black

Bisly UMS Supersensor is a multifunctional room sensor designed for advanced building automation applications. It integrates multiple sensing functions in a single device and communicates securely within the Bisly Building Automation infrastructure.



The UMS Supersensor combines air quality, climate, light, and presence detection, enabling energy-efficient control and enhanced occupant comfort. With encrypted RS-485 communication, legacy integration options, and a security-compliant relay output, it provides a versatile solution for modern buildings.

Electrical Data	
Supply voltage	24VDC±25%, reverse polarity protected
Power consumption	1.5 W max @24V all sensors active, sensor internal overcurrent protection at ca 1.1 A
Power Outputs	Software controllable High side power switch (0.35 A nominal) <ul style="list-style-type: none"> • Reverse polarity protection • Short-circuit protection • Overcurrent protection Port: +24V OUT
Sensors	<ul style="list-style-type: none"> • Air temperature: ±0.5 °C (max), -10 to 85 °C • Air relative humidity: ±4% rH (max), 0 – 80% rH • CO₂ concentration: 0 – 2000 ppm, ±150 ppm ± 0.5% of reading • Motion detection (PIR sensor): 4 m radius human detection range in normal conditions, in average @ ΔT ≥ 5 °C, v = 1 m/s, installation height 2.8 m • Light intensity: 0.1 – 30000 lux range (±20%) • Color temperature: 2000 to 5000 K (±500 K) • VOC (eTVOC) sensor: 0 – 30000 ppb range

Electrical Data (continued)

LED control	<ul style="list-style-type: none">• RGB LEDs, software controlled color and intensity• Configurable to indicate CO₂, VOC, Temperature, Relative Humidity, Movement and other
Digital / analog inputs	2 × Digital Inputs (+24VDC tolerant, internal 2kOhm pullup to +5VDC, active low level ≤ 2V) Ports: IN1 – IN2
PWM Outputs	3 × PWM output, 100 Hz default frequency, 0-12V operation range Ports: PWM 1-3
Firmware update	Over-The-Air Update capability
Communication interface	RS-485 (Bisly proprietary protocol) Interfaces with Bisly UM8 Pro Controller
Ambient operating temperature	+5 ... 40 °C
Humidity	max. 80% r.H. (non condensing)

Product Characteristics

Mounting type	Screw mount
Colours, finish	White, Black, matte
Flammability of casing	Fire retardant according to UL94 v0
Total weight	125 g
Product dimensions	98 × 110 × 40 mm

Certifications & Standards

Environmental protection class	IP30
Markings	CE, RoHS, WEEE
Directive compliance	LVD, EMC, RoHS, WEEE

Installation must be carried out by a qualified electrician in accordance with the relevant regulations.